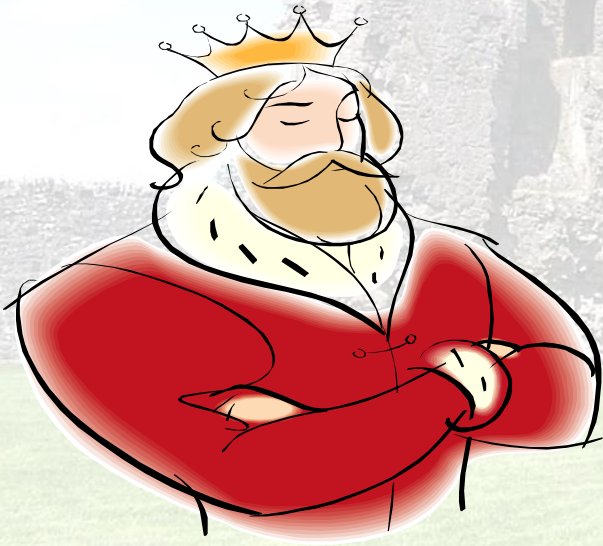


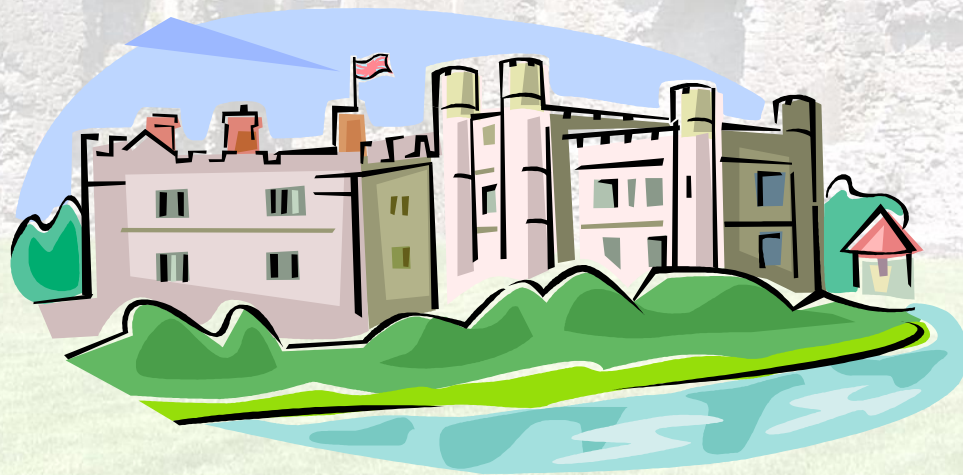
ROSCOMMON CASTLE

The History of the Castle

Once upon a time there was an English
King, Edward I who built a castle in
Roscommon. It was in the year 1269.



The castle he built was beside a lake and a large moat was dug around the castle and filled with water from the lake. It had two gatehouses which contained drawbridges. It also had large gates at the entrance to each gatehouse.



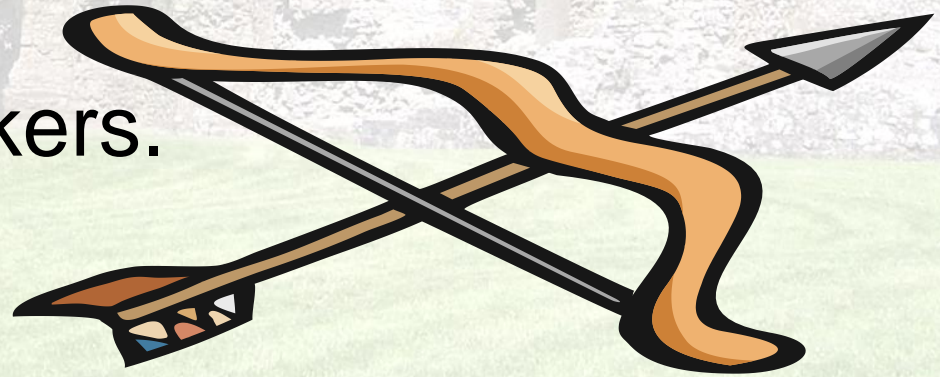
Many buildings such as barns, mills, stables, granaries and other workshops were found on castle grounds. A lot of activities happened within the outer walls of the castle.





Inside the castle walls you would find a kitchen, a hall, pantry and buttery, a bake house and lots of store rooms, where food and other supplies were kept.

It was very important that the castle was protected from any intruders. A murder hole, an opening in the roof, was put in so the soldiers could drop hot oil on or shoot arrows at attackers.

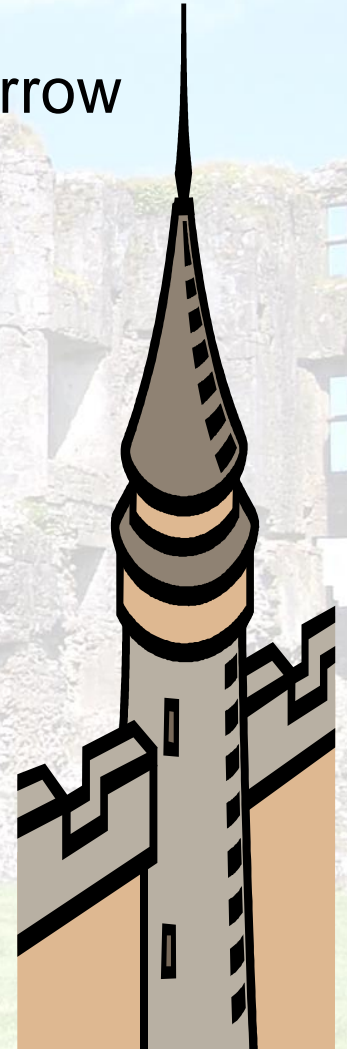


The castle also had large walls and arrow

loops where soldiers

could watch for intruders

and protect the castle.





The O'Connor family who lived in Roscommon were
in control of the area and were very powerful
Gaelic Kings in Connacht.



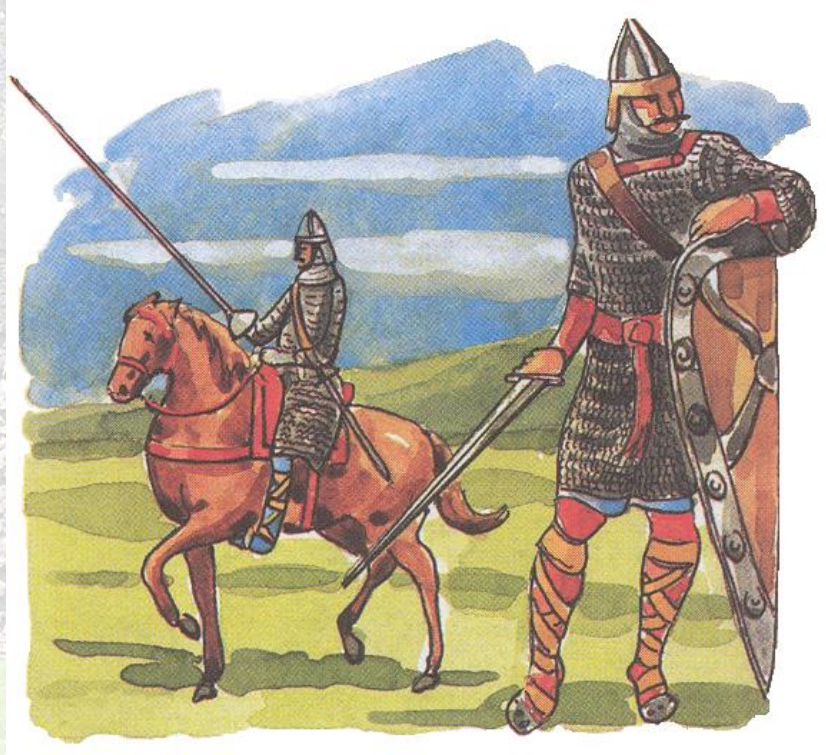
The O'Connor family enjoyed having a good time and had lots of parties. They enjoyed listening to music.

They liked to be entertained by minstrels and bards.

They supported harp music especially.



Both the English and the Irish spent many



years fighting over who owned the castle.



They had many fights during these years and
the castle was burned down many times.

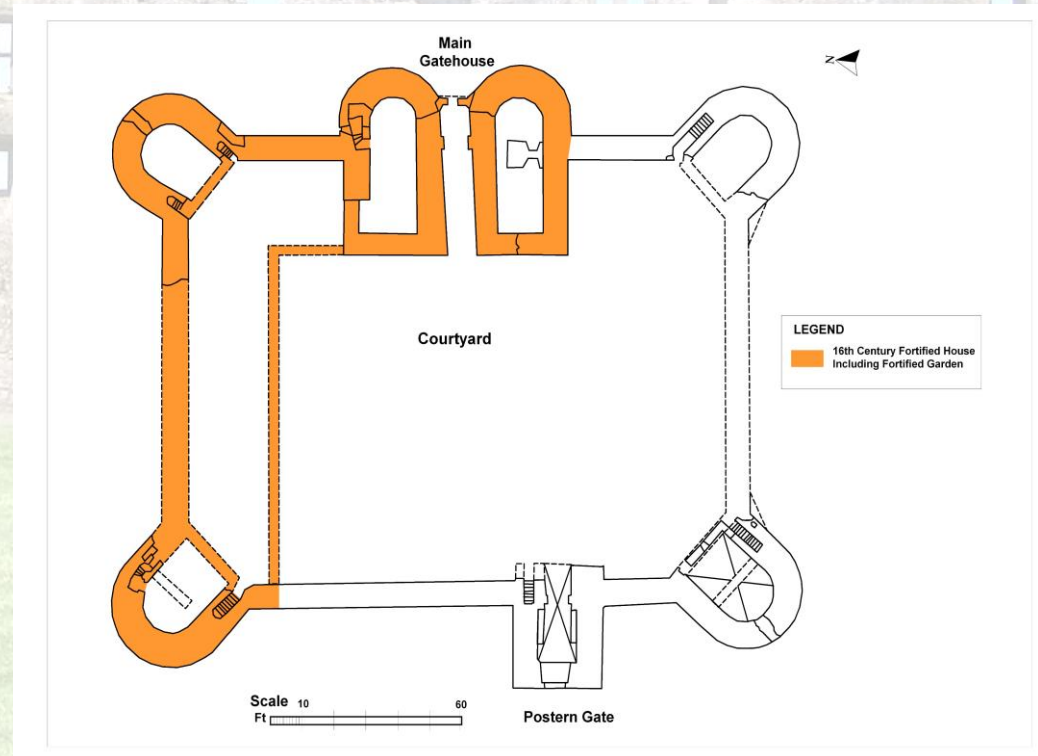


After many years an English man
called Sir Nicholas Malby
took control of the castle
and made some
changes to it.



He built an L-shaped building into the castle.

This L-Shaped building was used for accommodation and it included the gatehouse in it.



He converted a defensive castle into a luxurious and comfortable house for living in.

He replaced the arrow loops



with large windows

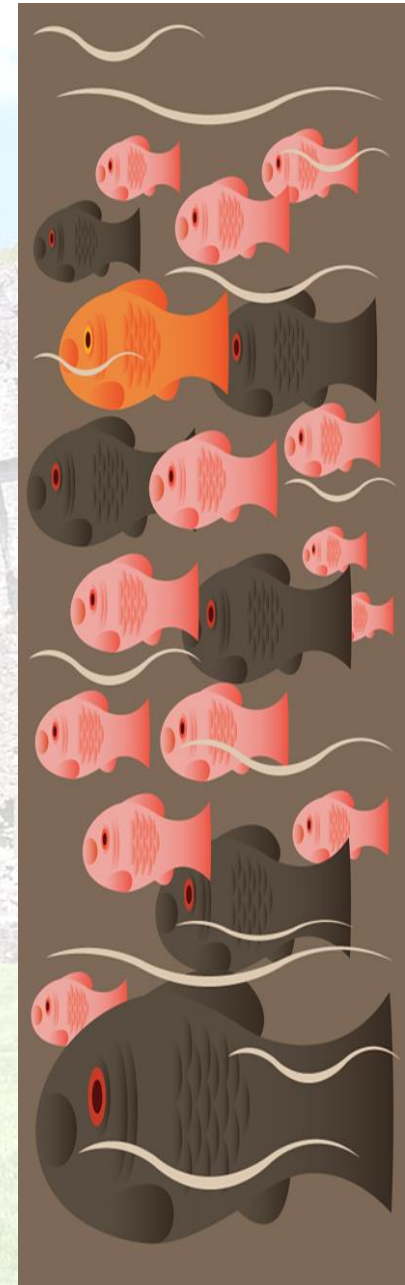
Malby created many gardens around the castle to help transform it into a grand living house. He added an orchard and kitchen garden to supply the house with fruit and vegetables.



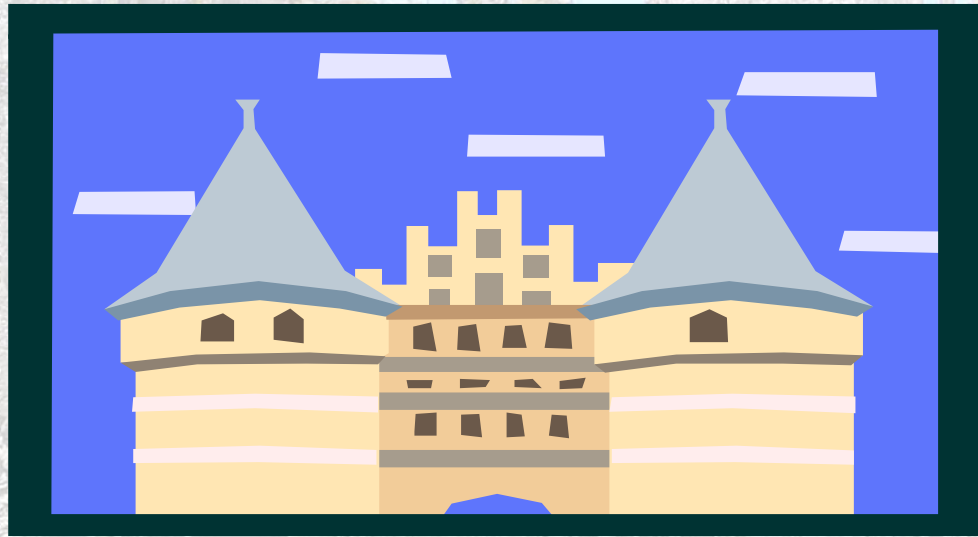
Stables and workshops were also a part of this new design.



He filled in most of
the moat
and used it
for a garden
and fish pond.



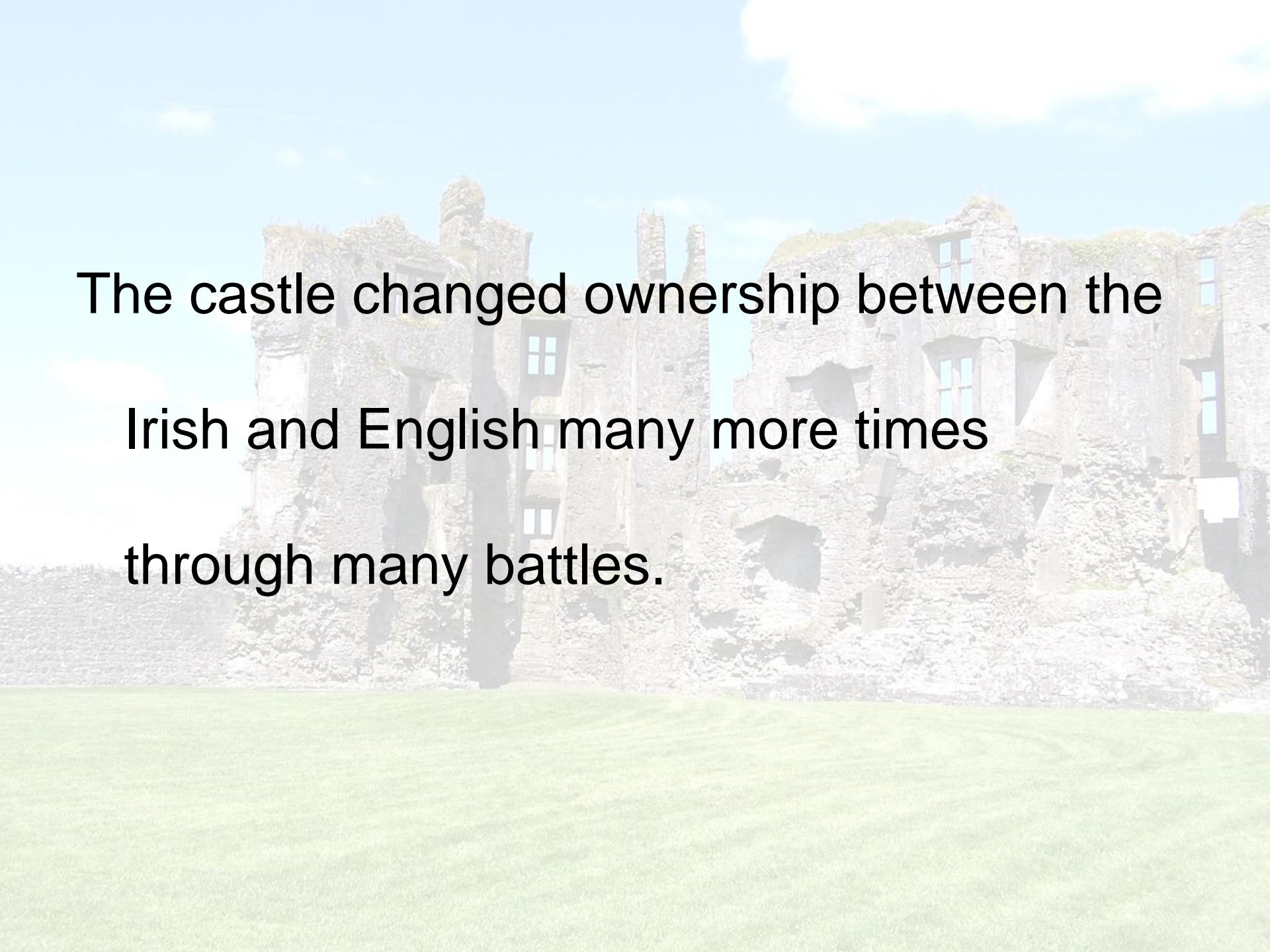
He made sure that the castle was still protected by keeping the large wall and towers.



It was very important that the castle was still defended...

Because the fighting continued between the Irish and English. Once two mischievous Irish men O'Connor and Mac Dermott were found guilty of betraying the English King. They began a fight and Roscommon Castle and town was burnt down.





The castle changed ownership between the
Irish and English many more times
through many battles.

Finally after many years a wealthy English family, the Capels were given the title of the Earls of Essex.

This family was given ownership of the castle but they decided not live in it.

They lived in England so the castle fell slowly into ruins.



Today the castle is in ruins but is still one of the largest buildings in County Roscommon and even in Ireland. It has one of the largest gatehouses in Ireland.



Some of the stones from the castle were used to build the Old Jail in Roscommon Town.

Loughnaneane Park was created to one side of the castle and today is a wonderful space full of peace and nature.

