

# *Outside Kilkenny Castle Trail* Name \_\_\_\_\_

## **Stop 1 Main Entrance**



Find this fossil.

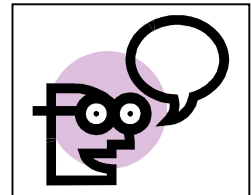
What kind of stone was used here?

1. Sandstone
2. Limestone
3. Basalt

Look up at the Coat of Arms over the entrance. Name the family who lived here. \_\_\_\_\_

*Why do you think this coat of arms was put here?*

*Who do you think used this entrance, the family or the servants? Why?*

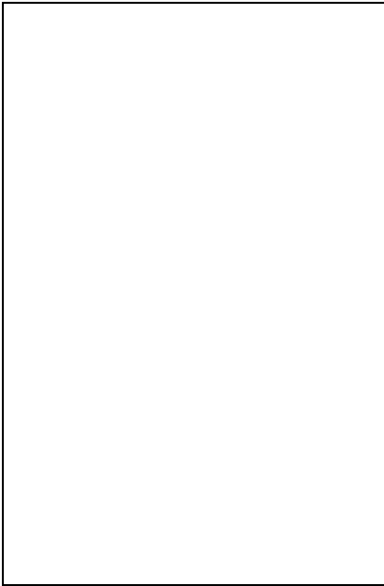


## **Stop 2 The Moat**

Look at the sally port and draw it in this box.



### Stop 3 The Parade Tower



Find an arrow loop window.  
Draw it in the box.



This entrance to the castle was for  
*the family who owned the castle*  
*the servants*

Why do you think that the Butlers made this entrance? 

### Stop 4 To the right of the main entrance

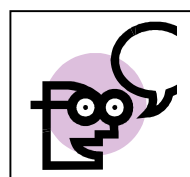


4

Find one of these hoppers.  
Write down the date \_\_\_\_\_



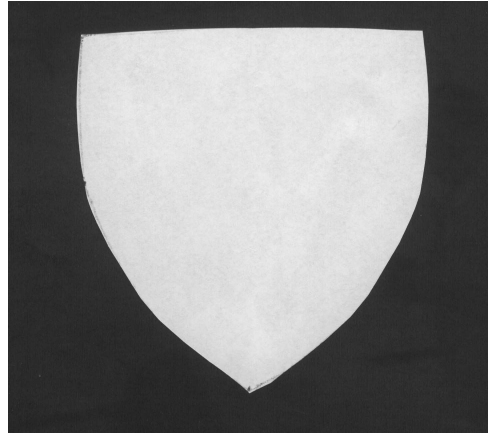
How does it connect with the coat of arms over the entrance?



How many hoppers can you see in the courtyard? \_\_\_\_\_

## Stop 5 The door into the castle

Look at each side of the door.  
Finish the picture.



## Stop 6 The Gallery Wing

How many of these trapdoors can you find? \_\_\_\_\_



What were they used for? Tick the correct picture.



## Stop 7 Viewing point in Rose Garden



Why was this a good place to build a castle?

